

DIRECT E.COLI CELL COUNT AT OD600

Puay Yen Yap and Dieter Trau, Tip Biosystems Pte Ltd, Singapore

- Photopette® enables fast cell counts of *E.coli* cells directly in the cell culture flask or bioreactor without sample transfer.
- Ideal for quick checks and grows curve measurements.

OBJECTIVE

E.coli cell counting at OD600 is demonstrated using the Photopette® handheld spectrophotometer [1, 2]. Almost no training is required. The method is easy and fast performed at the bioreactor or in the cell culture hood. *E.coli* can be directly measured at 600 nm in the cell culture flask. The method can be performed at any location and does not require a lab.

INTRODUCTION

E.coli is a bacteria and very widely used in biotechnology and bio-sciences. *E.coli* is the organism of choice for cloning, genetic research and the manufacturing of biologics or proteins.

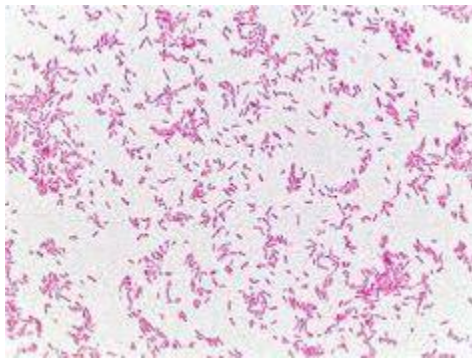


Figure 1: Light microscopic image of *E.coli* cells at 1000x magnification.

As seen in the micrograph of Figure 1, *E.coli* cells are cylindrical with a size of about 0.5 μm diameter and 2 μm in length. The number of *E.coli* cells, the dry mass and grows curves can be determined by measurements at OD600. The

OD600 method was calibrated against the colony forming units (CFU) of *E.coli* in a cell culture.

MATERIALS AND APPARATUS

Instrument:

- Photopette® with 600 nm wavelength

Reagents:

- *E.coli* strain
- Grows media and saline solution

Materials:

- 500 mL Erlenmeyer flask for cultivation

METHOD

It shall be noted that different spectrophotometers will give different OD600 for the *E.coli* sample. The reason for this is that *E.coli* cells are particles that scatter and absorb light. An *E.coli* cell sample does not follow the Lambert-Beer law, because it's a suspension and not a solution.

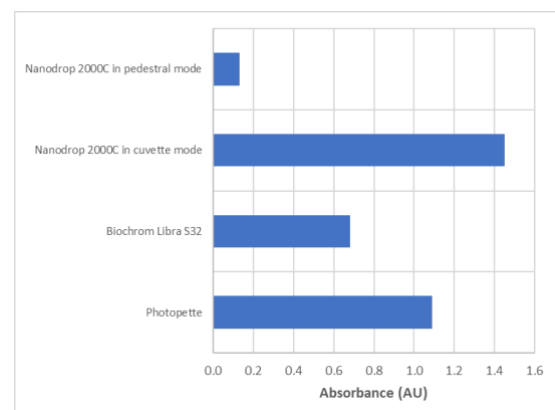


Figure 2: Differences observed in absorbance at 600 nm for the same *E.coli* sample with different spectrophotometers.

Figure 2 illustrates the large differences found in OD600 with different spectrophotometers for the same *E.coli* sample. A sample with an OD600 close to 1 for Photopette was used for the comparison experiment. Because different spectrophotometers give different readings for the same sample, every spectrophotometer needs an initial calibration. Here we demonstrate the calibration of the Photopette handheld spectrophotometer. The correlation between the OD600 and the cell number is done by a plating method to determine the colony forming units (CFU) of the *E.coli* sample.

INITIAL CALLIBRATION

E.coli cultivation: 200 mL of Lysogeny broth (LB broth) were inoculated with *E.coli* and cultivated over night at 37 °C in an Erlenmeyer flask until an OD600 of ~1.1 was reached. To perform the calibration up to higher OD, 1 mL of the culture was centrifuged, the supernatant was removed and another 1 mL culture was added. The sample was centrifuges again, the supernatant was removed and 1 mL saline was added and the cells were re-suspended. This *E.coli* stock solution reached an OD600 of 2.154 AU. Serial dilutions were made from the stock solution.

Determination of the colony forming units (CFU): The serial dilutions were further diluted by a factor of 80,000 (4 times 10x, followed by a final 8x dilution). 50 µL of the diluted *E.coli* serial dilutions were plated onto Petri dishes and were incubated over night at 37 °C and the colony forming units were counted. Only plates between 30 and 300 CFU were used for the calculation of the cell numbers. The cell number as CFU/mL was calculated by multiplication of the counted CFU on the Petri dish with the dilution factor of 80,000 and multiplication of 20 to correct for the CFU per mL.

Determination of the dry mass: 1 mL *E.coli* cells from the serial dilution were centrifuged down in weighted reaction tubes, the supernatant was removed and 1 mL deionized water was added. The cells were centrifuged down again and the supernatant was removed. The weighted tubes were dried at 80 °C overnight and the tubes are weighted. The dry mass was calculated at the difference of the pre-weighted tubes and the tubes with dried *E.coli* cells.

OD600 measurement: Connect the Photopette device to a smart device and open the Photopette App. Click on “Measurement type” and select 600 nm. Place a CuveTip® firmly onto the Photopette® device and insert into the culture media as BLANK sample to perform auto-zero. Ensure that there is no air-bubble trapped in the CuveTip® cavity. A guide to use the CuveTip® correct is available as download [2]. Use the same CuveTip® to take 3 more measurements in BLANK sample (this is the 0 cells/mL measurement). Remove any sample trapped in the CuveTip cavity by touching a clean paper wipe. Take 3 measurements in every serial dilution of the *E.coli* samples; take the average and plot the OD600 against the cell count (CFU) from the cell plating experiment.

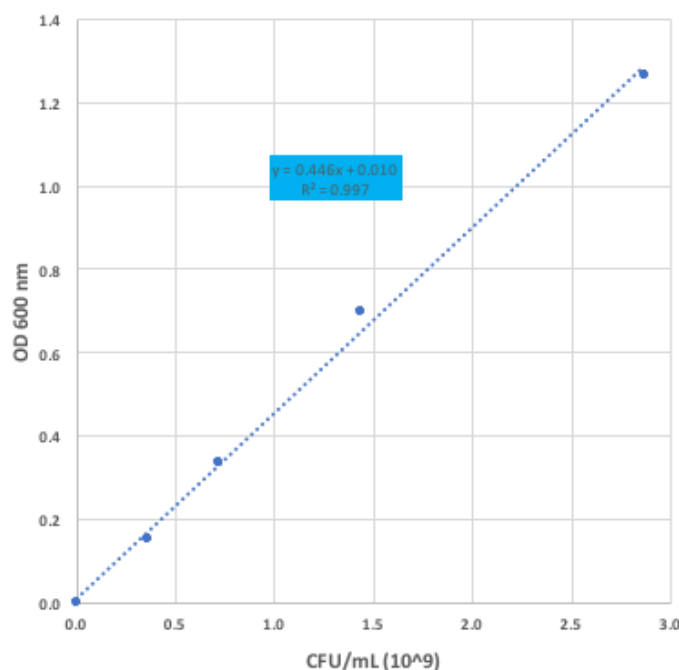


Figure 3: Calibration curve for *E.coli* cells up to ~OD1.3. The OD600 was plotted versus the colony forming units (CFU) of an *E.coli* sample.

For the Photopette device a large linear range of up to ~2 AU at OD600 with an excellent R square of 0.99 was observed (Figure 3). By using a linear regression, direct *E.coli* cell counts of up to 3×10^9 cells are possible.

We found an *E.coli* cell number of 2.2×10^9 cells per 1 OD600 unit, this is within the data found in the literature.

We also determined the *E.coli* biomass as “dry mass” as a function of the OD600. From Figure 4 it can be seen that a OD600 of 1 correlates to a dry mass of 0.23 mg/mL.

From Figure 3, one unit of OD600 corresponds to 2.66×10^9 cells. From this the dry mass of a single *E.coli* cell is calculated as $\sim 8.6 \times 10^{-11}$ mg.

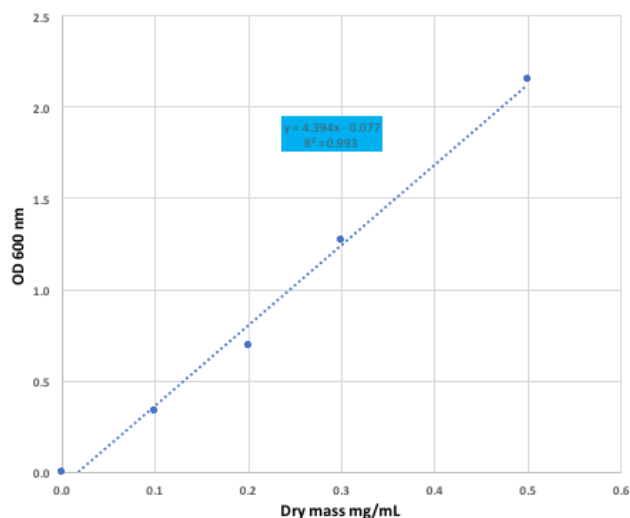


Figure 4: OD600 of *E.coli* cells as a function of the dry cell mass.

Creating a method with Method Maker: If desired the data can be used to create a method using the “Method Maker” function. Click on “Method Maker” in the menu at the bottom of the app. Click on “Dataset” and load the dataset that contains the calibration data from the OD600 measurement. Click on “Unit” and choose “User-defined”, type “cell/mL”. Click on “Calibration Type” and choose “Linear Fit”. Click “Next”. Fill in the corresponding cell numbers. Click “Next”. You will now see the calibration curve on the screen including its equation and R Square value. Click on “Method Name” and name the method “E.coli Cell Count”. If you wish, add instructions about the method and its creator and references if any. Click “next”, this creates the new method.

Dynamic Respond Range

The calibration curve of Figure 3 shows a linear range of up to OD 2 with a high R Square. At OD 1 an *E.coli* cell number of 2.4×10^9 cells per mL was observed.

Recalibration

Recalibration is recommended if the environment is changing (e.g. different temperature). Highest accuracy is achieved if the calibration is performed directly before the measurement.

Errors

The highest error is not in the photometric measurement, it's in the cell counting method determining the CFU of the *E.coli* sample. The absorbance error is about 0.003 AU or better.

SUMMARY

Photopette can determine *E.coli* count and biomass within seconds at any location. We found an *E.coli* cell number of 2.66×10^9 cells per 1 OD600 unit, this is within the data found in the literature. The counting range is from 500 million to 6 billion *E.coli* cells per millilitre. Almost no training is required. By using the inbuilt *E.coli* counting function in the Photopette app the measurement can be completed in less than a minute. Photopette is ideal for quick checks, troubleshooting and quality control. Its applicable for the microbiology lab or the bio-fermentation plant.

REFERENCES

[1] Tip Biosystems Pte Ltd, "Photopette User Manual V1.0.0" Singapore, 2017.

[2] Tip Biosystems Pte Ltd, Technical Note “How to use Photopette’s CuveTip correctly”.

Photopette and CuveTip are registered trademarks of Tip Biosystems Pte Ltd, Singapore.